

# BB15/25 SERIES BOX SCRAPERS

HP REQUIRED  
17-55 HP

HITCH  
Cat. 1



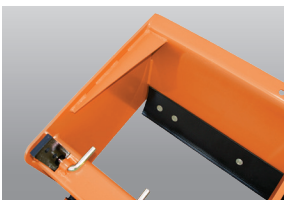
DIRTWORKING

## Level, finish, grade, and backfill - all with one tool.

Land Pride's BB15 and BB25 Series Fixed Bar Box Scrapers are ideal for ripping, leveling, finish grading, and backfilling applications at feedlots, outdoor arenas, and construction sites, or for maintenance operations on lanes or roadways. The BB25 offers five different working widths to choose from. The roll-formed moldboard keeps materials flowing putting less drag on the Box Scraper, resulting in lower HP requirements and faster working conditions. The rear-mounted blade allows for backfilling trenches or along foundations.



	BB1560	BB1566	BB1572	BB2560	BB2566	BB2572	BB2584	BB2596
<b>Horsepower</b>	17-40 HP			25-55 HP				
<b>Hitch</b>	Cat. 1			Cat. 1				
<b>Working Width (cm)</b>	60" (152)	66" (168)	72" (183)	60" (152)	66" (167)	72" (182)	84" (213)	96" (244)
<b>Height of Moldboard</b>	17"			17"				
<b>Side Panel Material</b>	5/16"			3/8"				
<b>Depth of Bucket</b>	22"			22"				
<b>Overall Depth</b>	31-1/2"			31-1/2"				
<b>Overall Height</b>	35"			35"				
<b>Weight - lb (kg)</b>	428 (194)	450 (204)	504 (229)	471 (214)	500 (227)	549 (249)	593 (269)	658 (298)
<b>Number of Shanks</b>	4	5	6	5	5	7	7	8
<b>A-Frame Material</b>	1/2" x 3" Flat Bar			1/2" Plate				
<b>Cutting Edges</b>	Two 1/2" x 6" High Carbon Heat Treated Blades, Reversible & Replaceable			Two 1/2" x 6" High Carbon Heat Treated Blades, Reversible & Replaceable				
<b>Colors</b>								



Side panel gussets reinforce the structural integrity during extreme conditions. (BB25 only)

\*See dealer for complete warranty information.

