

# SG25 SKID GRADERS



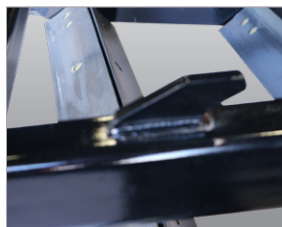
**AVAILABLE FOR: SSV65 / SSV75 / SVL65-2 / SVL75-2 / SVL95-2s / SVL97-2**

- Ripper teeth break compacted soils
- Bi-directional blades; Adjustable cutting angles
- Replaceable skid shoes
- Bucket carrier lugs on top

Landscapers, contractors, and developers can level construction sites, prepare seedbeds, and rejuvenate driveways forwards or backwards. Ripper teeth break compacted soils for a better finish.



Full length, heavy-duty skid shoes are reversible and replaceable.



After loading the SG25 onto a trailer, a bucket can be mounted on top using the storage lugs, to save space.



Dual height grader blades allow the grader to be adjusted to desired amount of cultivation, leveling, & grading.

	SG2572	SG2584
<b>Working Width (m)</b>	72" (1.83)	84" (2.13)
<b>Overall Width (m)</b>	81-1/4" (2.06)	93-1/4" (2.37)
<b>Weight w/Shanks (kg)</b>	886 lbs (401.9)	952 lbs (431.8)
<b>Number of Straight Shanks</b>	6	7
<b>Skid Steer &amp; Tractor HP Requirement (kw)</b>	40-95 HP (29.8-70.8)	
<b>Overall Length (m)</b>	52-1/4" (1.33)	
<b>Overall Height (cm)</b>	22" (55.9)	
<b>Side Panel Height with Skid Shoes (cm)</b>	15-1/2" (39.4)	
<b>Side Panel Length (m)</b>	50" (1.27)	
<b>Side Panel Thickness (mm)</b>	1/4" (6) Thick with 2-3/4" (7) formed edges	
<b>Skid Shoe Construction (mm)</b>	3/8" (10) Thick with a formed bevel to prevent gouging	
<b>Cutting Edges (cm)</b>	Four 1/2" x 6" (1.3x15.2) high-carbon, heat-treated blades that are reversible and replaceable	
<b>Cutting Edge Adjustment (cm)</b>	Variable vertical adjustment from level grade to 1-1/2" (3.8) below grade	